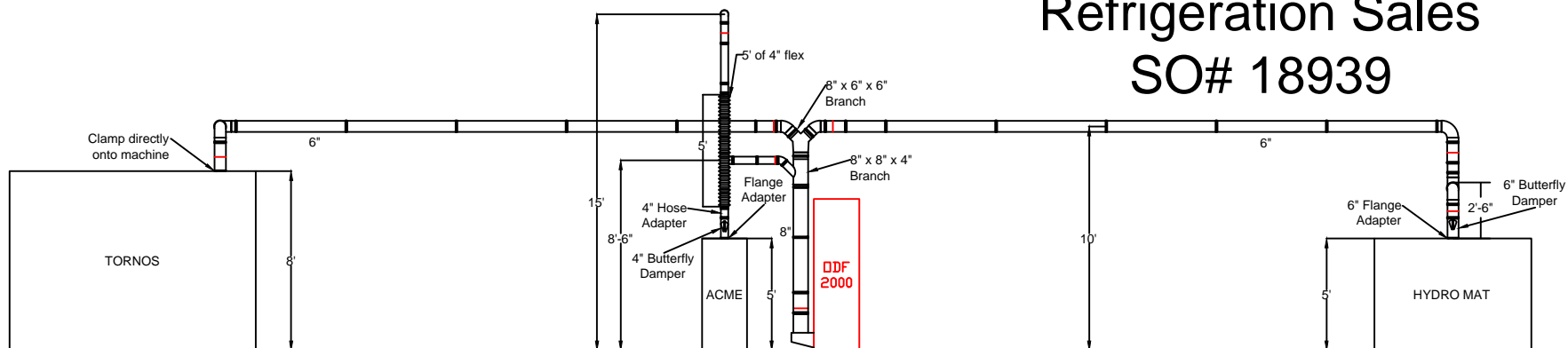
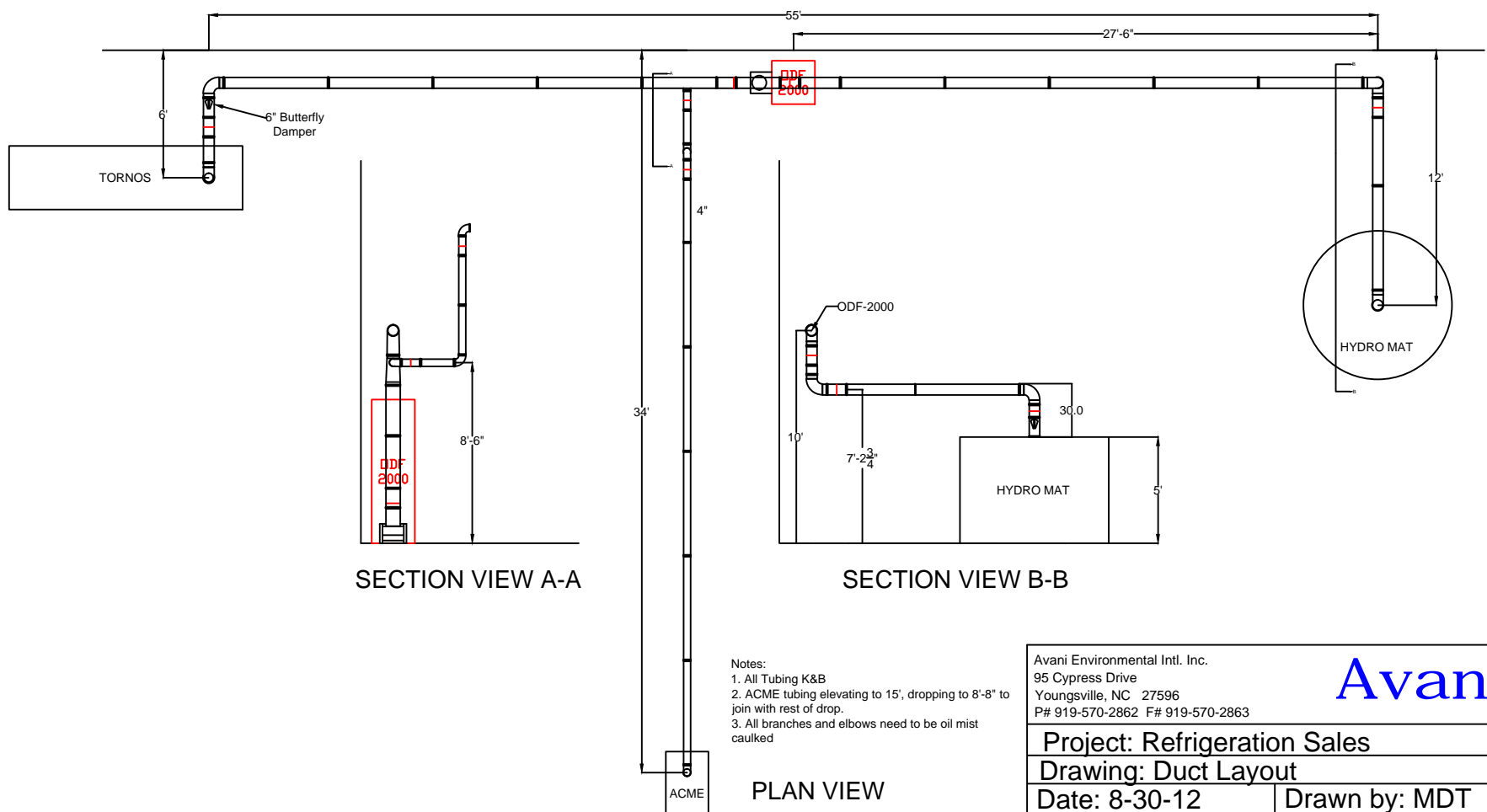


Refrigeration Sales

SO# 18939



ELEVATION VIEW



SECTION VIEW A-A

SECTION VIEW B-B

- Notes:
1. All Tubing K&B
 2. ACME tubing elevating to 15', dropping to 8'-8" to join with rest of drop.
 3. All branches and elbows need to be oil mist caulked

PLAN VIEW

Avani Environmental Intl. Inc.
95 Cypress Drive
Youngsville, NC 27596
P# 919-570-2862 F# 919-570-2863

Avani

Project: Refrigeration Sales	
Drawing: Duct Layout	
Date: 8-30-12	Drawn by: MDT
Sheet No: 1 OF 1	