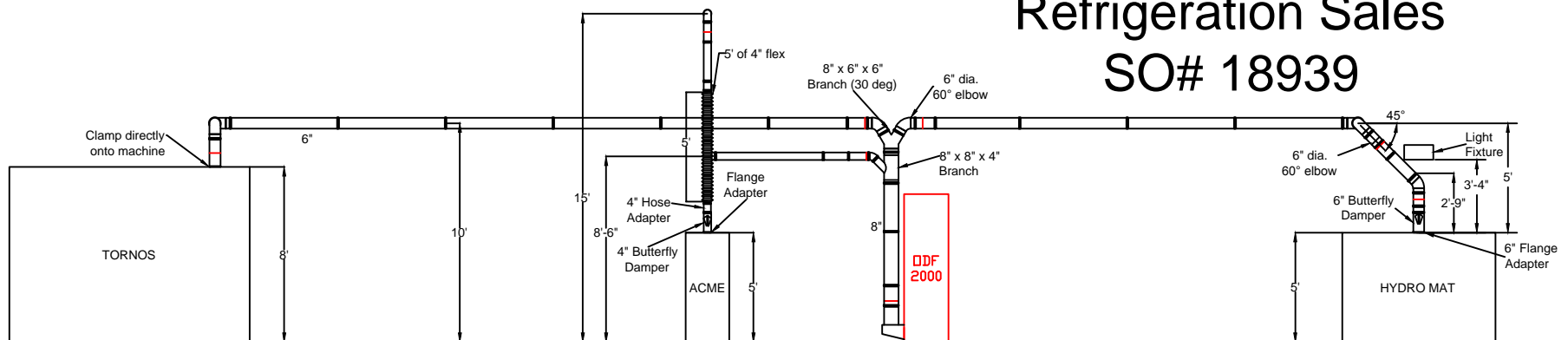
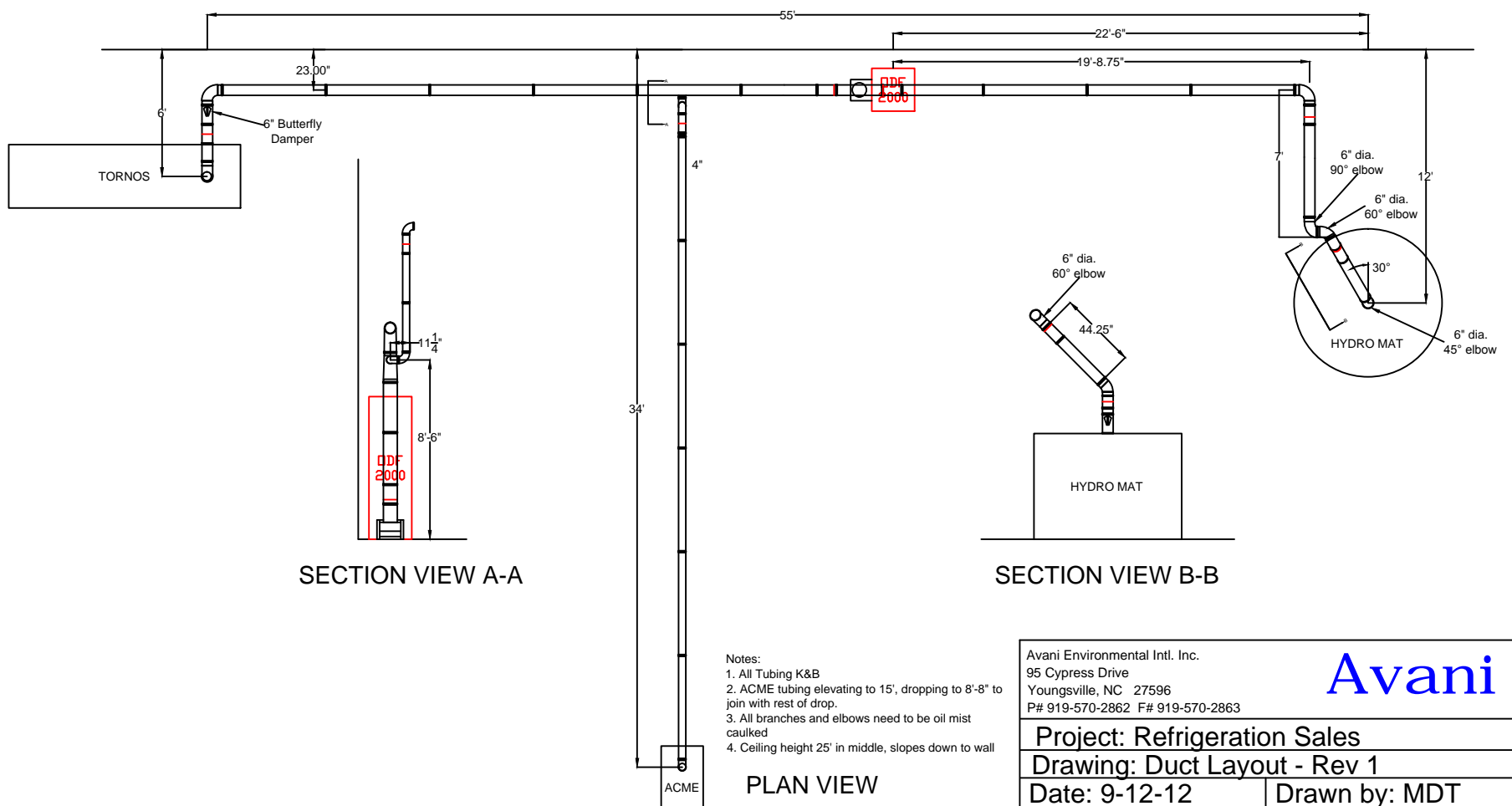


# Refrigeration Sales

## SO# 18939



ELEVATION VIEW



SECTION VIEW A-A

SECTION VIEW B-B

- Notes:
1. All Tubing K&B
  2. ACME tubing elevating to 15', dropping to 8'-8" to join with rest of drop.
  3. All branches and elbows need to be oil mist caulked
  4. Ceiling height 25' in middle, slopes down to wall

PLAN VIEW

Avani Environmental Intl. Inc.  
 95 Cypress Drive  
 Youngsville, NC 27596  
 P# 919-570-2862 F# 919-570-2863

**Avani**

Project: Refrigeration Sales	
Drawing: Duct Layout - Rev 1	
Date: 9-12-12	Drawn by: MDT
Sheet No: 1 OF 1	