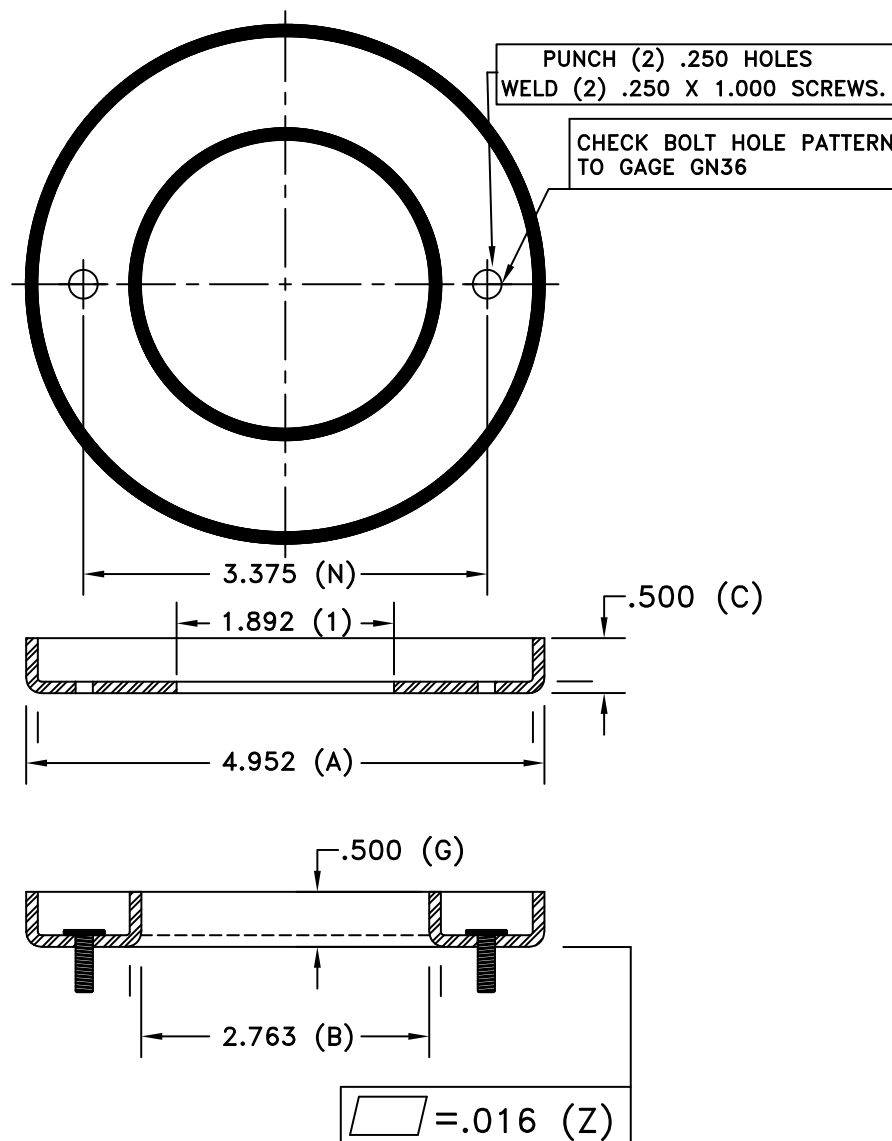


PART NUMBER: 043-3000-000B	DRAWN BY: TODD STYLE: OL-1B	DATE:	METCOM REVISIONS	BY	REV.	APP.
	DATE: 11/21/97	11/21/97	CHANGED TO CAD	TODD	A1	
CUSTOMER: METCOM INC.	METCOM INC. COOKEVILLE, TN.	11/21/97	SCRE W WAS .25 X .75	TODD	B1	
P/N : 043-3000-000B		8/29/05	ADDED NOTE	RF	C1	
MATERIAL TYPE: EG .025		CUSTOMER REV. LEVEL: N/A				
IN QAS AS: MT 043-3000B 1,A,B,C,G,N,Z		FILE: 0433000B				

Production Release



TOLERANCES HEIGHTS $\pm .030$
DIAMETERS $\pm .015$
EXCEPT AS NOTED

NO UNAUTHORIZED MANUAL CHANGES TO PRINT.

ALL DIMENSIONS ARE IN INCHES UNLESS OTHERWISE SPECIFIED.